

The background of the slide features a photograph of three students singing into microphones. The image is faded and serves as a backdrop for the text. The students are young adults, likely high school or college age, and are captured in a moment of musical performance. The overall aesthetic is clean and professional, with a focus on the school's chapel activities.

Chapel at Smithville Christian High School

Belong. Believe. Succeed.

Presenting Team



- Gordon Park, Spiritual Life Director
- Neale Robb, Chapel Speaker
- Will Lammers, Praise Team Coordinator
- Robert Gerryts, AV Crew Coordinator
- Marlene Bergsma, Communications & Admissions



Chapel At Smithville Christian



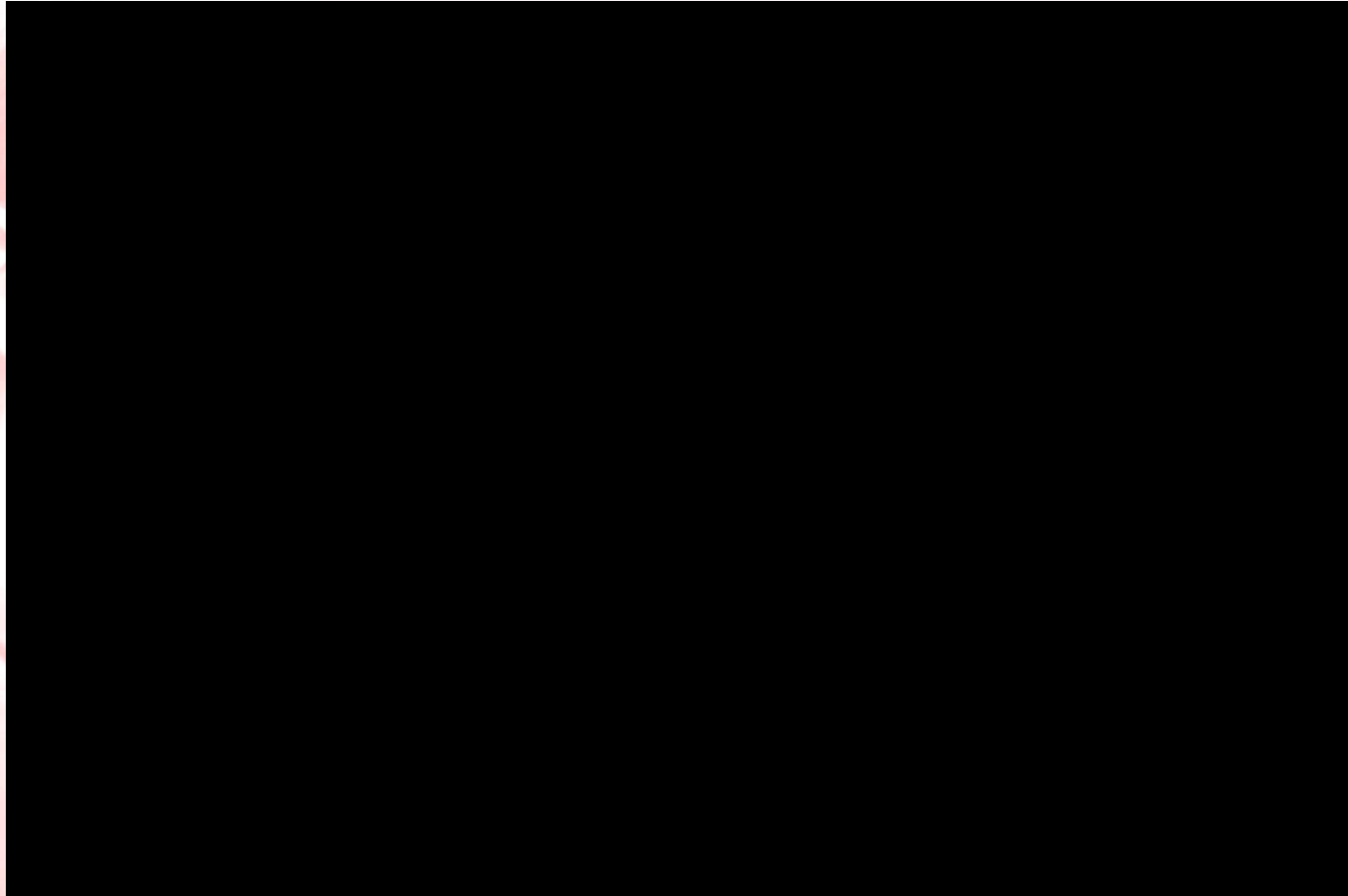
- ❑ We are blessed
- ❑ This has been a long journey
- ❑ Chapel is always changing
- ❑ We have strong administrative support (= \$\$)
- ❑ We don't always get it right; we don't have all the answers
- ❑ We hope to encourage you



Presentation Format

1. A glimpse of what chapel looks like at Smithville Christian
2. Contributions from our various perspectives
3. Praise team video
4. General questions
5. Specific questions to specific presenters

Chapel at Smithville Christian



<http://www.youtube.com/watch?v=cEenhVcmlbw>



BACKGROUND – GP & NR

ASSEMBLY EVERY WEEK

½ HOUR IN DURATION (sometimes less, sometimes more)

ANNOUNCEMENTS / DEVOTION / MOVIES /
VARIETY OF PURPOSES

EACH TEACHER REQUIRED TO BE
RESPONSIBLE FOR 1-2 ASSEMBLIES /
YEAR

TEACHER LINES UP CLASS / SPEAKER
/MOVIE / ETC

ASSEMBLY COMMITTEE (PRINCIPAL + 1-2
TEACHERS) FILLS IN THE GAPS

A SHIFT

- THE SHIFT BEGAN IN THE LATE '90s, EARLY 2000s
- THE SHIFT WAS NOT A FIX
- THE SHIFT MOVED IN CONJUNCTION WITH WHAT WAS HAPPENING IN YOUTH / CONTEMPORARY WORSHIP SERVICES AT THE TIME
- STUDENT POPULATION WAS BECOMING MORE DENOMINATIONALLY DIVERSE
- AS A SCHOOL, WE WERE WILLING AND ABLE TO PROVIDE CHAPEL EXPERIENCES WHICH INVOLVED A 'YOUTH' WORSHIP EXPERIENCE

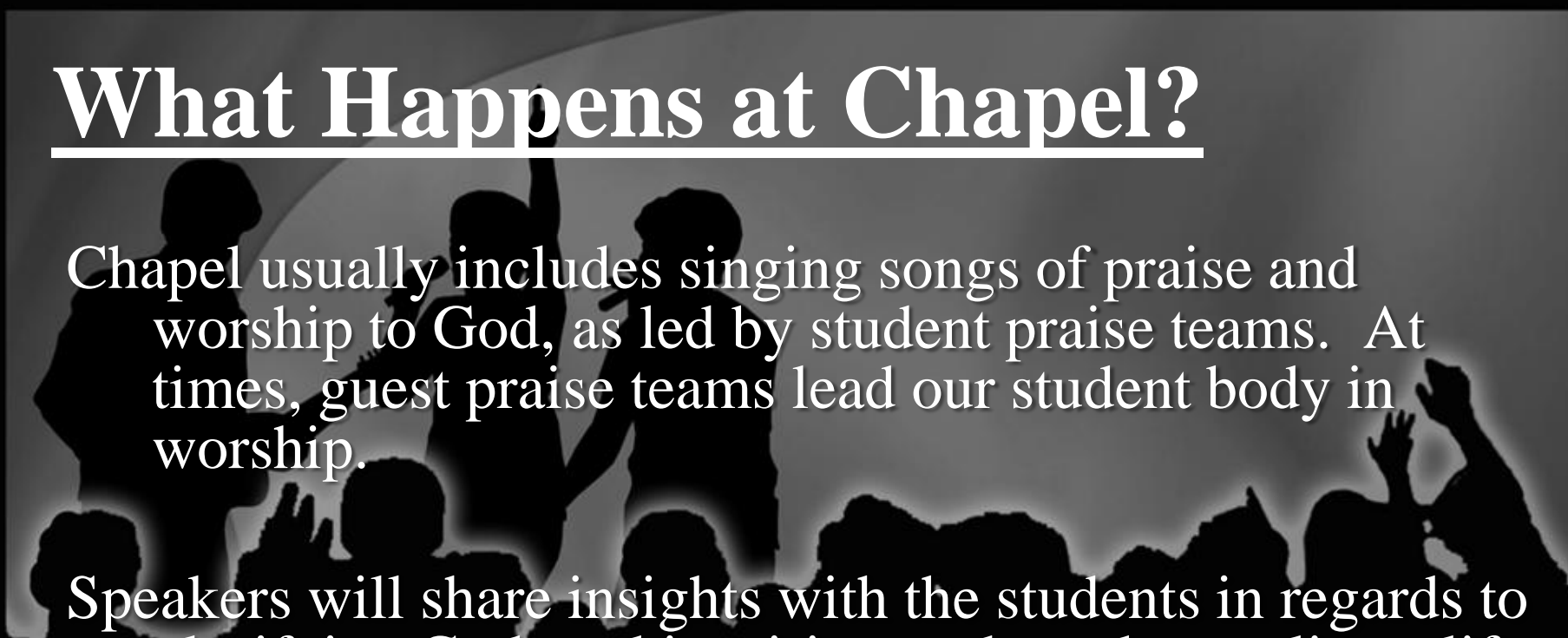


ASSEMBLY becomes CHAPEL

Chapel is a time where the entire school gathers together to worship God and listen to His word. Although there is time given to announcements for school events, celebrations of birthdays, etc. - the focus of the **Chapel** is upon Jesus Christ and His love for us.

We use the term 'CHAPEL' deliberately in reference to our worship times, and students know that worship is our primary focus.

What Happens at Chapel?

A black and white photograph showing the silhouettes of a group of people, likely students, in a worship setting. Some individuals have their hands raised in the air, suggesting a moment of praise or prayer. The background is a light, hazy glow.

Chapel usually includes singing songs of praise and worship to God, as led by student praise teams. At times, guest praise teams lead our student body in worship.

Speakers will share insights with the students in regards to glorifying God, and inspiring each student to live a life that honours God. Speakers may be OUR Spiritual Life Director, staff members, invited guests, alumnae or other students in the school.

Speakers are invited to speak on the Chapel theme for the year (set by Spiritual Life Director & Admin) but there is no mandate to have to do so.



Why Is Chapel Important To Us?

- Chapel is truly a means of bringing our school together and of shaping the lives of our students in regards to their readiness to go out into their classes, their friendships and the wider world as representatives of Jesus Christ. They are a tremendous time of thankfulness, reflection and inspiration.
- For most students and staff of Smithville Christian, Chapel is integral to who we are as a community.

Bridging from Assembly to Chapel

- **Intentionality**

- Made a clear choice to create a worship time instead of simply a student gathering

- **Administrative commitment**

- Administrator gave leadership & supported others involved

- **Flexible length**

- Chapel considered a weekly high point in student life and worship

Bridging from Assembly to Chapel

- Good equipment
- Worship teams
- Spiritual life director
- Spiritual Emphasis Week [SEW]



Chapel Culture



Acceptance

- students regularly reminded through words of praise to accept one another and guests

Encouragement

- Students and staff give each other encouragement even with simple things like announcements or birthdays

Participation

- Student participation encouraged and applauded regularly

The background of the slide features a grayscale silhouette of a church service. In the foreground, several people are silhouetted against a bright, glowing light source, likely a window or stage lights. Some individuals are standing and raising their hands in praise or prayer, while others are seated. The overall atmosphere is one of worship and community.

Speakers

Drawn from four main areas:

1. In house

- **Gordon Park & Neale Robb,
sometimes students or another staff
member**

2. Community

- **Pastors, Youth Pastors, Alumni**

The background of the slide features a grayscale silhouette of a church service. In the foreground, the silhouettes of several people are visible, some with their hands raised in prayer or praise. In the background, three individuals are standing, possibly a choir or a band, with one person holding a microphone. The overall atmosphere is one of a religious gathering.

Speakers (cont'd)

3. Christian organizations

- CTI, Missions groups

4. Community organizations

- Canadian Blood Services, MADD, Grimsby Life Centre

Praise Teams – Will Lammers

- ❑ Advertise
- ❑ Audition in singles or pairs
 - encourage
 - converse
- ❑ Create teams
- ❑ Feature student choice, student voice

Praise Team Preparation - WL

- ❑ Rehearse
- ❑ Expect
- ❑ Empower



AV Club as Learning – R. Gerryts

AV Club is at its heart a group of students learning about technology, and learning how to serve others with that knowledge.

Learning occurs best when there is **time**.

Learning occurs best when there is **communication**.

My Job: Shaping the time and communication
so learning can occur.

AV Club:

Shaping time to support Chapel

- Providing time for training.
- Providing time for “heavy lifting” setup.
- Providing time for early morning setup.
- Allowing time for sound checks.
- Allowing time for cleanup.
- Breaking things down.

AV Club:

Shaping communication to support Chapel

- Determining needs early and often.
- Avoiding the last minute requests.
- Preparing for last minute requests.
- Handling last minute requests.
- Understanding lack of perfection.

AV Club: Final Thoughts

Technology is really about people, therefore AV Club is primarily a people club.

“It’s never just a microphone.”

We are most successful when no one even knows we are there. “The Ninjas of Light and Sound”

Telling the story. . .website



SMITHVILLE CHRISTIAN HIGH SCHOOL

Smithville Christian High School Smithville, Ontario
Belong. Believe. Succeed.

Thursday, October 17, 2013

☐ The Web ☒ Only This Website

HOME | ABOUT US | FOR STUDENTS & PARENTS | PROGRAM | STUDENT SERVICES & ADMISSIONS | LIBRARY & RESEARCH | ATHLETICS & ACTIVITIES | ALUMNI | PHOTOS | CONTACT

Want to learn more about Belonging, Believing and Succeeding at Smithville Christian High School? **CLICK HERE** to request more information about enrolling, bursaries, tours, international students and more.

Belong. Believe. Succeed.

Welcome to Smithville Christian High School, where students belong, believe and succeed.

Our students love their school, and know they belong to an amazing student body where wonderful friendships are formed. Each student is known by name by teachers who care deeply about them and their learning.

Faith is part of every subject, and part of every day. Our courses meet Ministry of Education requirements but always include a Biblical way of looking at living and learning. Prayer, Bible reading, devotions and praise and worship assemblies are part of our daily routine.

Bulletin Board

We are thankful that we raised a TON of food for West Lincoln Community Care. See photos on Facebook. Have a Blessed Thanksgiving everyone.

Our guys are golden! Congratulations to members of the Senior Boys Volleyball team for winning GOLD at the University of Toronto Invitational tournament. To watch this team in action, come to our next tournament Oct. 17 at Eden. Click here for the tournament schedule. See photos from both the Junior and Senior Boys Volleyball teams on Facebook.

How to be a history maker. Visit our blog for stories, pictures (and jokes) from this week's chapel.

Watch our latest chapel video: [Tell the World](#).

This is a great place to **Belong**. Read about the Grade 9 Blast on the blog or see photos on Facebook.

Read about our opening chapel: we started the year with a jubilee attitude. This is a great place to **Believe**.

Read Grade 12 student testimonies.

Watch our Our Three-Minute Yearbook or a Video from our choir tour to Ottawa.

Here's a glimpse of what it's like at our weekly chapels. Watch this student-made video.

We're on top of the world! Click here for the highlights video.

Research shows Christian school graduates are active, engaged citizens! Read about the findings of the Carus Education Survey. Visit the Carus website to download a copy of the full report.

Did you know there are thousands of dollars in our bursary fund? Do you want to attend a Christian school? Contact us to find out more. We believe. You belong here.

Educating Teens for Service in the Light of God's Word

Smithville Christian is excited about the impact we are having in training kingdom citizens. Our school is a friendly, lively welcoming place, where students of all denominations and walks of life are impacted daily by the instruction and example of caring Christian teachers.

Every day, in every class and extra-curricular activity, our students learn that our world belongs to God and that they have a role in shaping it for Christ.

     Edsby

All content property of Smithville Christian
GO STORM!

Smithville Christian High School 6488 Smithville Rd. PO Box 40, Smithville, ON L0K 2A0 Tel 905.957.3255

 [Share](#) [0](#) [More](#) [Next Blog](#) [Create Blog](#) [Sign In](#)

Smithville Christian High School

Thursday, 3 October 2013

How to be history maker

It's pretty easy to come up with a list of history makers, Bible teacher Neale Robb told students at chapel today. They are people like the Apostle Paul, Martin Luther, William Tyndale, William Wilberforce, Mother Teresa or Billy Graham -- people who are famous for their skills as preachers, evangelists, reformers, missionaries, Bible translators or abolitionists.



**Smithville Christian High School**
[Like](#) You like this.

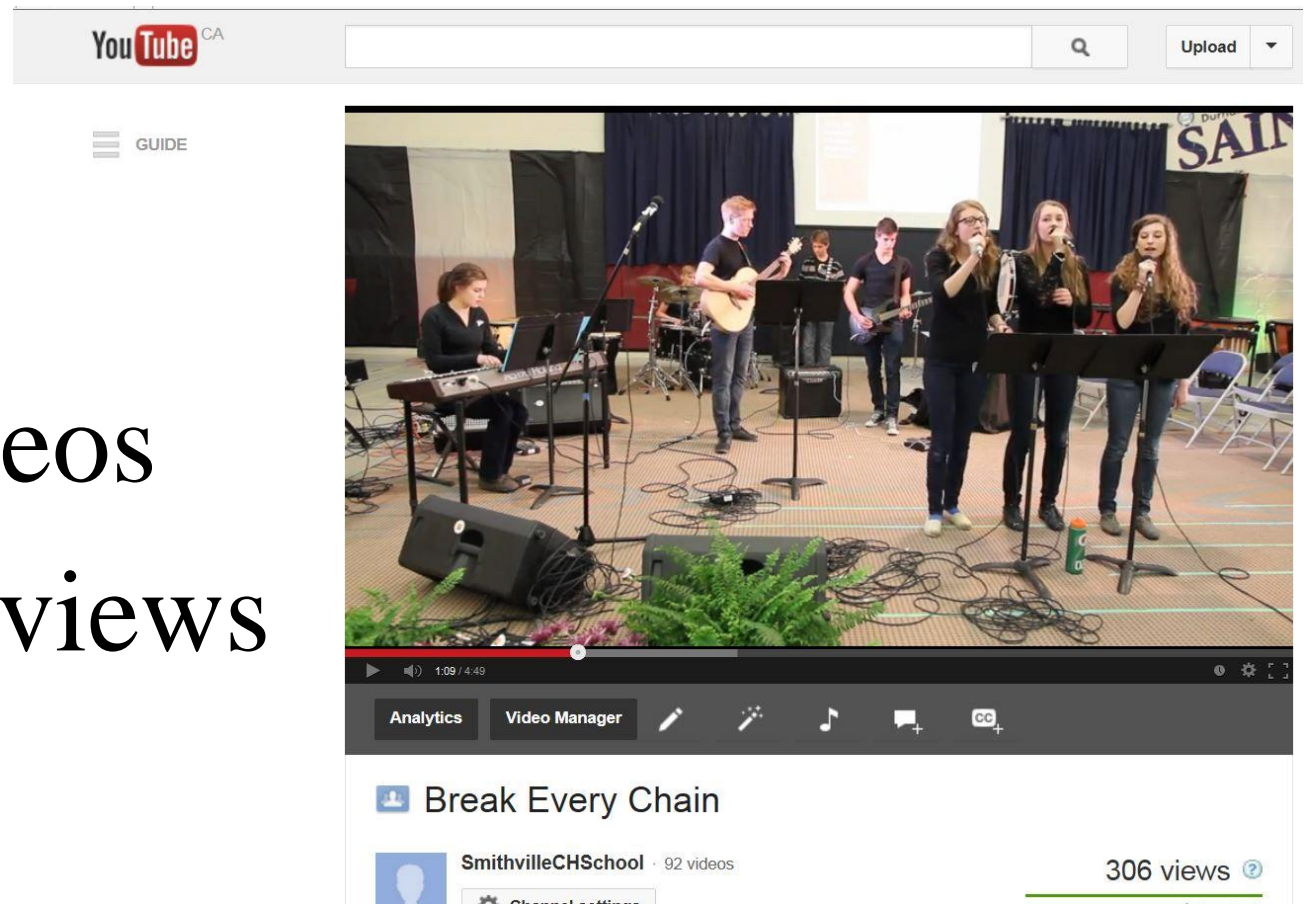
Follow by Email

Blog Archive

- 2013 (8)
 - October (1)
 - How to be history maker
 - September (4)
 - February (2)
 - January (1)

Telling the story. . .YouTube

- ❑ 110 videos
- ❑ 28,000 views





Time for one more?



Questions? Comments?

- ❑ General questions to the entire group
- ❑ Specific questions to an individual



Thank you.



**Our contact info and copies of the presentation available at
www.smithvillechristian.ca**